

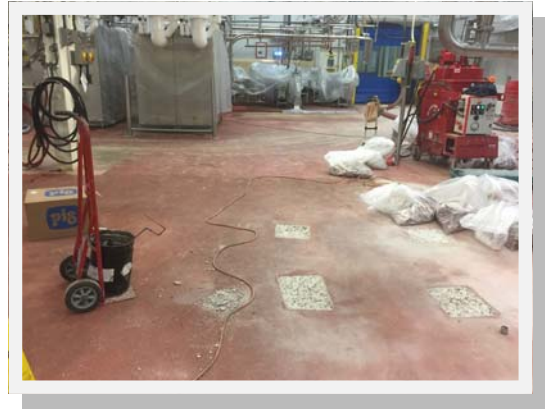
Customer: Ice Cream Producer
Location: Columbia, PA
Specialist: Ryan Hungarter
Flooring System: Dur-A-Flex Coatings
Date Installed: February, 2017

Our client needed a solution for some of the floor surfaces in the ice cream production area at their facility in central PA.



The old coating was worn, which created slip hazards and inadequate drainage.

Surface preparation is key to ensuring an excellent finished result, and CPE doesn't cut corners.



After removing loose material and shot blasting the entire surface to remove the old coating and to create adequate surface profile for the proper adhesion of the new system, we patched all holes and large cracks using urethane mortar.

CPE installed Dur-A-Flex Poly-Crete MDP 1/4" system with an anti-microbial additive, top-coated with Dur-A-Flex Poly-Crete CF on some floor surfaces and Dur-A-Flex U-Crete HPQ 1/4" system, top-coated with a Dur-A-Flex chemically resistant urethane on the remaining floor surfaces.





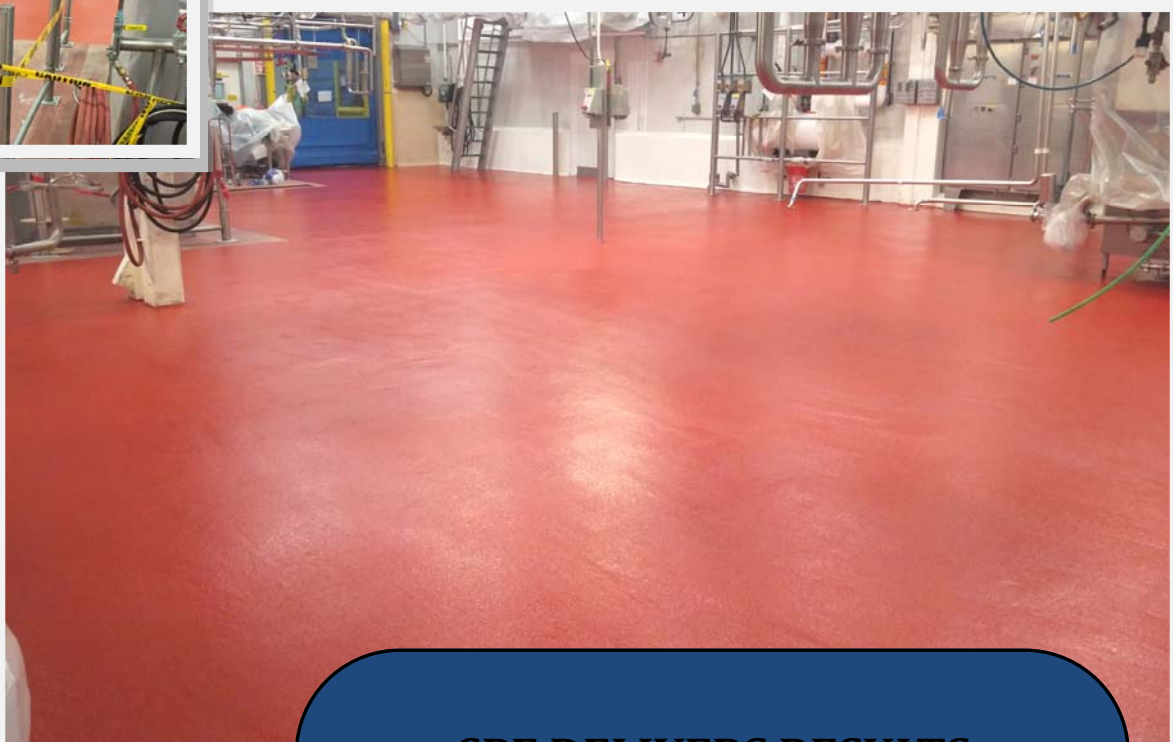
SERVICE SYSTEMS SOLUTIONS

940 Pointview Avenue, Suite C

Ephrata, PA 17522

PH: 717-617-2025

FX: 717-945-7667



CPE DELIVERS RESULTS

Aside from the added benefits of being anti-microbial and chemically resistant, the finished floors provide greater slip resistance, better drainage, and will be easier to clean and maintain.

CPE has the knowledge and expertise to find solutions for a wide array of customer needs. Ask your CPE specialist how we can assist you!